

INSPECTION CHAMBERS:

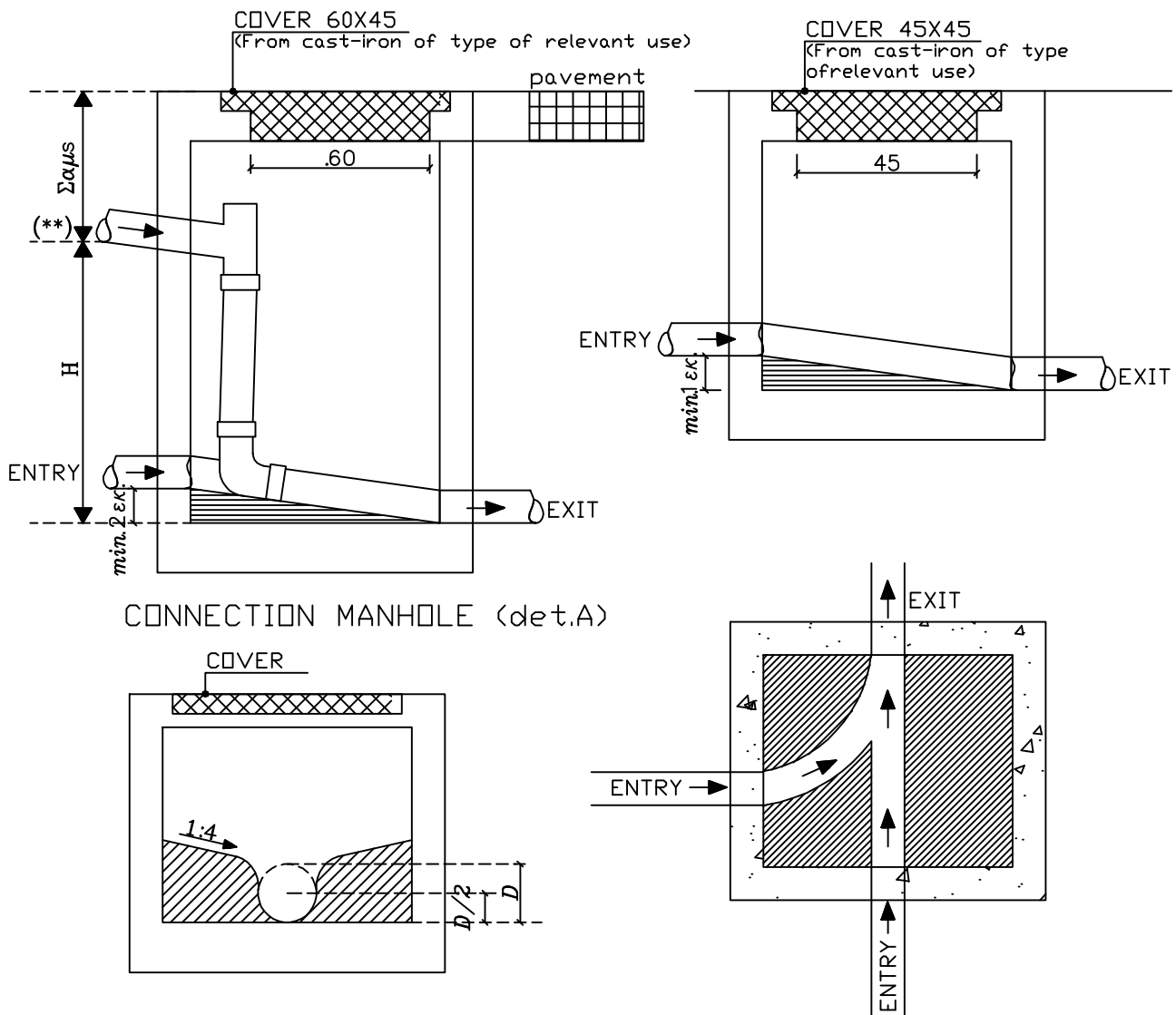
4,1 The inspection chambers are the internal manholes of inspection of the private house connection sewer and inspection chambers are required in each point where the direction of the sewer changes and provided that the change exceeds the 45°

4,2 Must be square or circular and they are manufactured from cast in situ or precast concrete, bricks or other materials approved by the Sewerage Board

4,3 They should be watertight and must not allow ventilation.

4,4 Manhole covers must be cast-iron of clear opening according to table below. All covers should comply with CYS-EN124.

4,5 Details and dimensions of manholes should be according with the following drawings and table (A).



TYPICAL SECTION OF SEWER MANHOLE

Note.(**) In case where the distance H of P.H.C is bigger than 0,30m.

(see detail A)

In the case of connection in depth greater than 1,30m the householder should apply in writing to the Technical department of the Board before the construction of the Private Sewer of the Building.